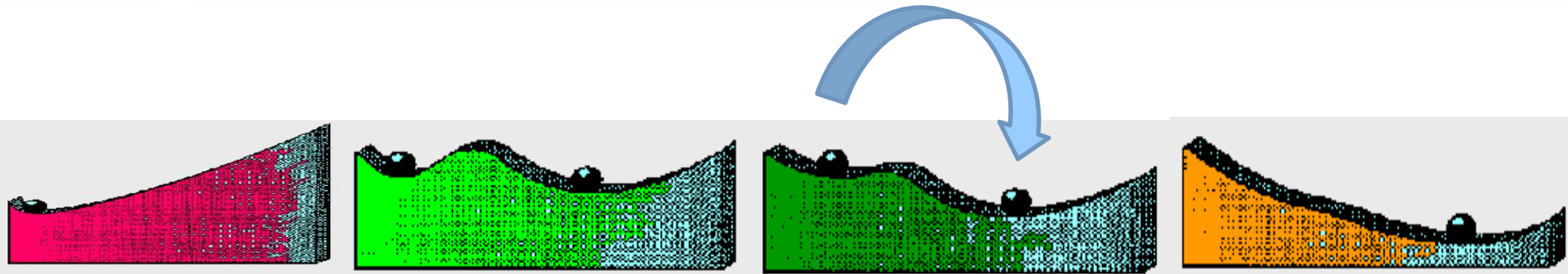


Performance of Mason Lake

Where has the Lake been and where is it at?



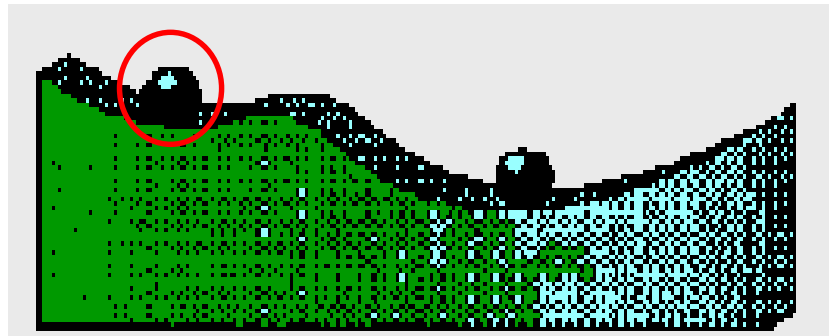


Mason Lake's Stable State

- Look at the habitat and fish information from the 1930s to now to highlight the performance of Mason Lake.

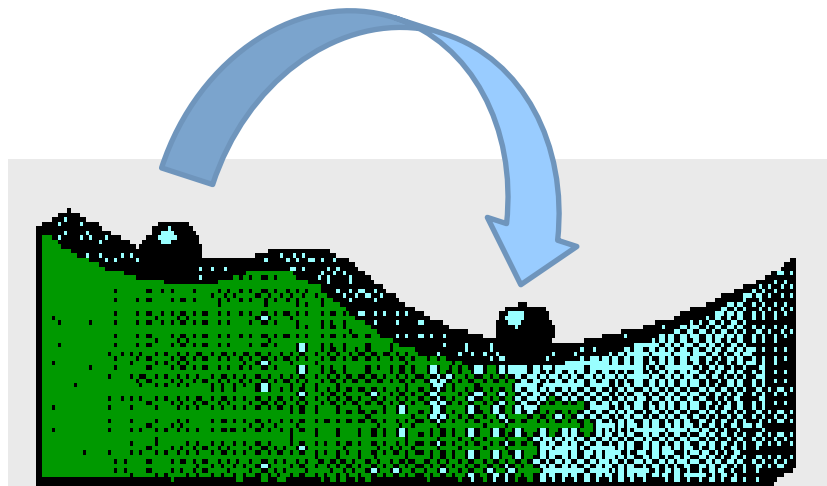
Where has Mason Lake been?

YEARS(S)	FISH & HABITAT HISTORY
1932-38	Rough fish removed 1932-34. Few carp reported. Largemouth bass, sunfish, crappies, pike suckers, and pickerel. "Weeds coming up thick." "Water quite green."
1938-41	Gamefish fishery begins to decline. Rough fish removed: 550 lb. (1938); 6,790 lb. (1939); 7,700 lb. (1940); 990 lb. (1941)
1942	No rough fish removal, six walleyes caught in nets. Gamefish continue to decline.



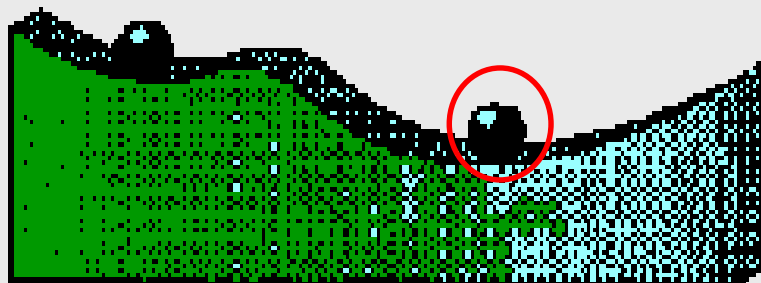
Where has Mason Lake been?

YEARS(S)	FISH & HABITAT HISTORY
1943-45	<p>Rough fish removal: 33,000 lb. (1943); 113,750 lb. (1944); 4,790 lb. (1945)</p> <p>Fish survey – Carp (4-10 lb. each), white sucker, northern pike, largemouth bass, sunfish, yellow bass, white bass, black crappies were dominant, channel catfish, brown bullheads. Stocked bass.</p> <p>First plant survey – “Floating and emergent vegetation in shoreline areas and in Burn’s and Morris Cove.” “Secchi Disk < 1 foot.” Algae plant growth.</p>



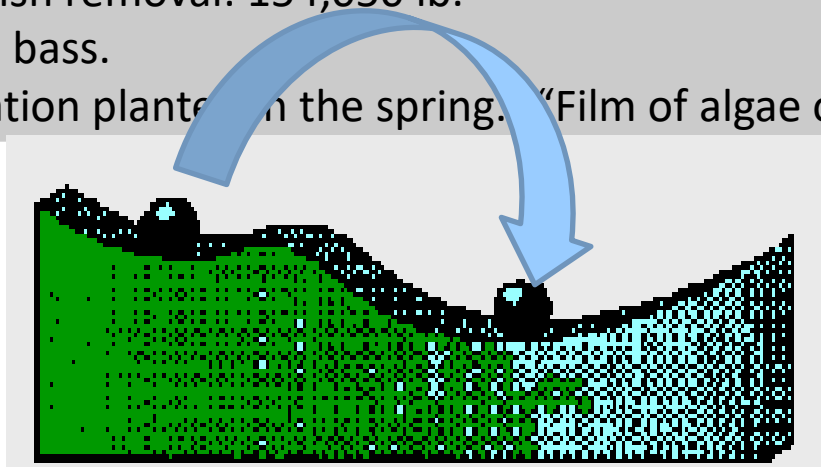
Where has Mason Lake been?

YEARS(S)	FISH & HABITAT HISTORY
1946-50	<p>Rough fish removal: 25,000 lb. (1946); 3,100 lb. (1947); 34,075 lb. (1948); 65,457 lb. (1949); 37,090 lb. (1950). "Skinny gamefish and panfish." Stocked bass.</p> <p>"Algae blooms intense."</p>
1951-52	<p>Rough fish removal: 199,930 lb. (1951); none due to market (1952) Stocked bass.</p> <p>"Few weed beds left." "Secchi disk depth < 1 foot."</p>
1953-55	<p>Rough fish removal: 14,100 lb. (1953); none due to market (1954) Fish kills in 1954 and 1955.</p> <p>"Pea soup green and fish kill." "Bottom almost completely void of plants."</p>



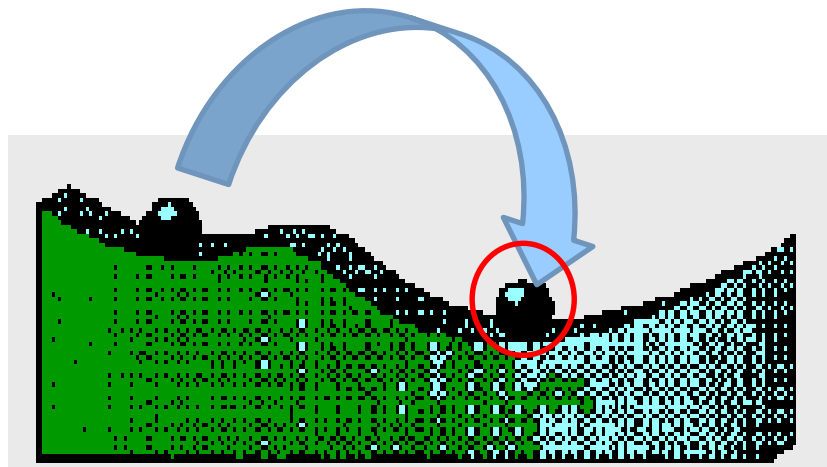
Where has Mason Lake been?

YEARS(S)	FISH & HABITAT HISTORY
1955	<p>Lake Mason Improvement Association formed.</p> <p>Drawdown and rotenone treatment. 400,000 lb. carp removed (average 3.4 lb. each). 108,328 lb. gamefish (sunfish, crappies, yellow bass).</p>
1956-58	<p>Not a complete carp eradication. Chemically treat Amey Pond.</p> <p>Continue to stock gamefish.</p> <p>Vegetation coming back. Secchi disk is 8.2 feet in spring 56', 10-17 inches in summer. Greatest cause of poor water clarity thought to be SW wind and wave action causing the resuspension of sediment, predominantly clay and silt.</p>
1959	<p>Rough fish removal: 154,050 lb.</p> <p>Stocked bass.</p> <p>"Vegetation planted in the spring. "Film of algae over most of the lake."</p>



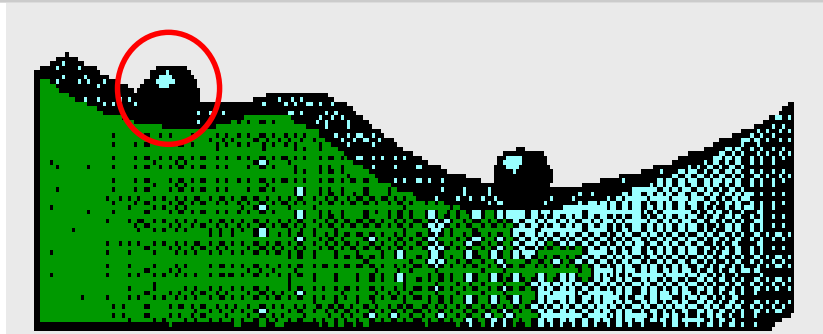
Where has Mason Lake been?

YEARS(S)	FISH & HABITAT HISTORY
1960-64	<p>Rough fish removal: 96,440 lb. (1960); 133,050 lb. (1961); 129,050 lb. (1962), 89,900 lb. (1963)</p> <p>Chemically treated McCall Lake.</p> <p>Stocked: largemouth bass (10,066,400 fingerlings, 500 adults), bluegill (95,000 fingerings, 90 adults), northern pike (800 fingerlings, 50 adults)</p>
1965-68	<p>Rough fish removal: 69,000 lb. (1965); 62,500 lb. (1966); 87,500 lb. (1967).</p> <p>Stocked northern pike (3,183 8-22")</p> <p>"Water always dirty."</p>



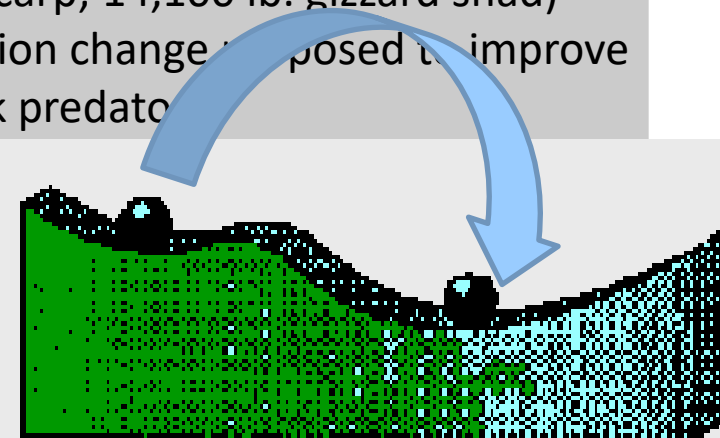
Where has Mason Lake been?

YEARS(S)	FISH & HABITAT HISTORY
1970	Complete chemical treatment.
1971-76	Stocked gamefish and minnows. Summer fish kills. "Algae chokes lake." "Runoff extreme." "Algae blooms." Chemically treat plants.
1977-82	Chemically treat plants. Carp appear in 1979 survey.
1983	Fish kill. "Weeds not too bad."
1984-87	Fish surveys. "Good fishery for bass, pike, bluegill, crappies." Anglers become unhappy with bluegill size structure "stunted". Too many plants.

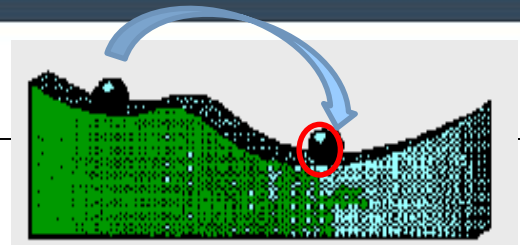
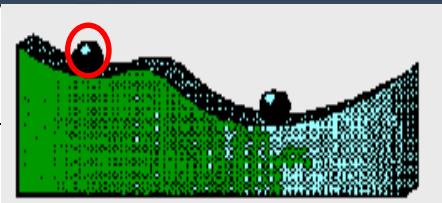


Where has Mason Lake been?

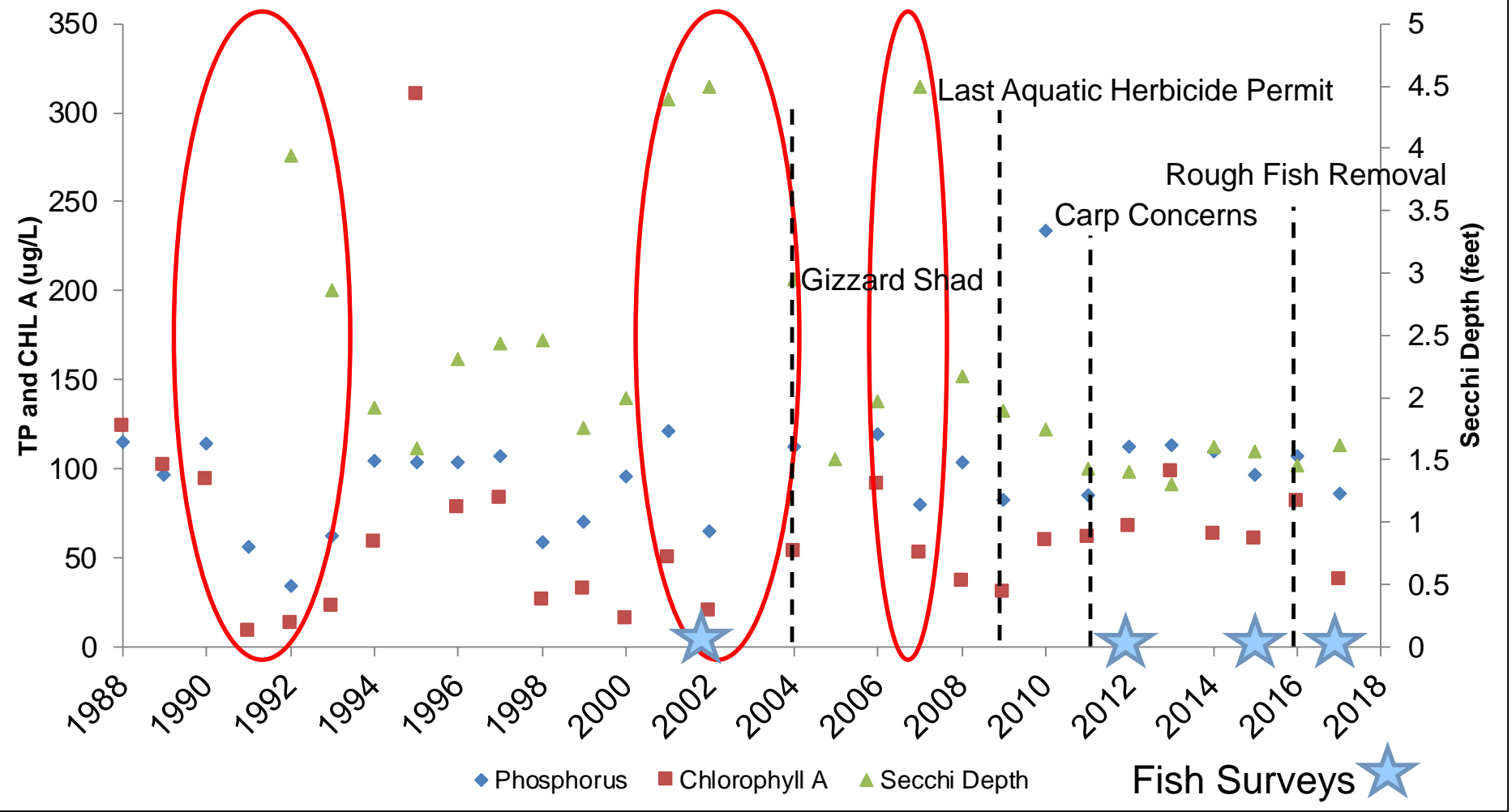
YEARS(S)	FISH & HABITAT HISTORY
1988-05	Removal of 50 M panfish. 1.5-5 ft drawdowns to reduce aquatic plants a 0-5ft depths. Chemically treat plants (1990-2005). Fish surveys. Plant survey shows a negative reduction in plants. Classifies lake as eutrophic to hypereutrophic. Warnings to stop chemical treatments.
2006-09	Chemically treat plants. No more permits issued in 2010.
2011	Complaints of carp.
2012, 15	Fisheries surveys. Carp not at high numbers in 2012, high in 2015. Gizzard shad caught, entered in 2004.
2016	Rough fish contract and removal (42,105 lb. carp; 14,100 lb. gizzard shad) Largemouth bass & panfish meeting; regulation change proposed to improve bass size structure and protect big fish. Stock predator
2017	Fisheries survey; Rough fish removal



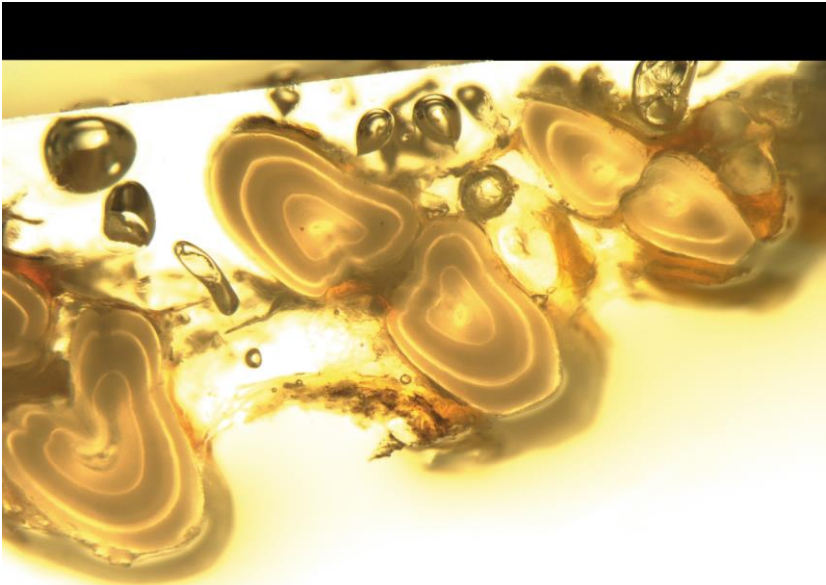
Where has Mason Lake been?



Mason Lake
1988-2017
Summer Means - Phosphorus, Chlorophyll A, Secchi Disc

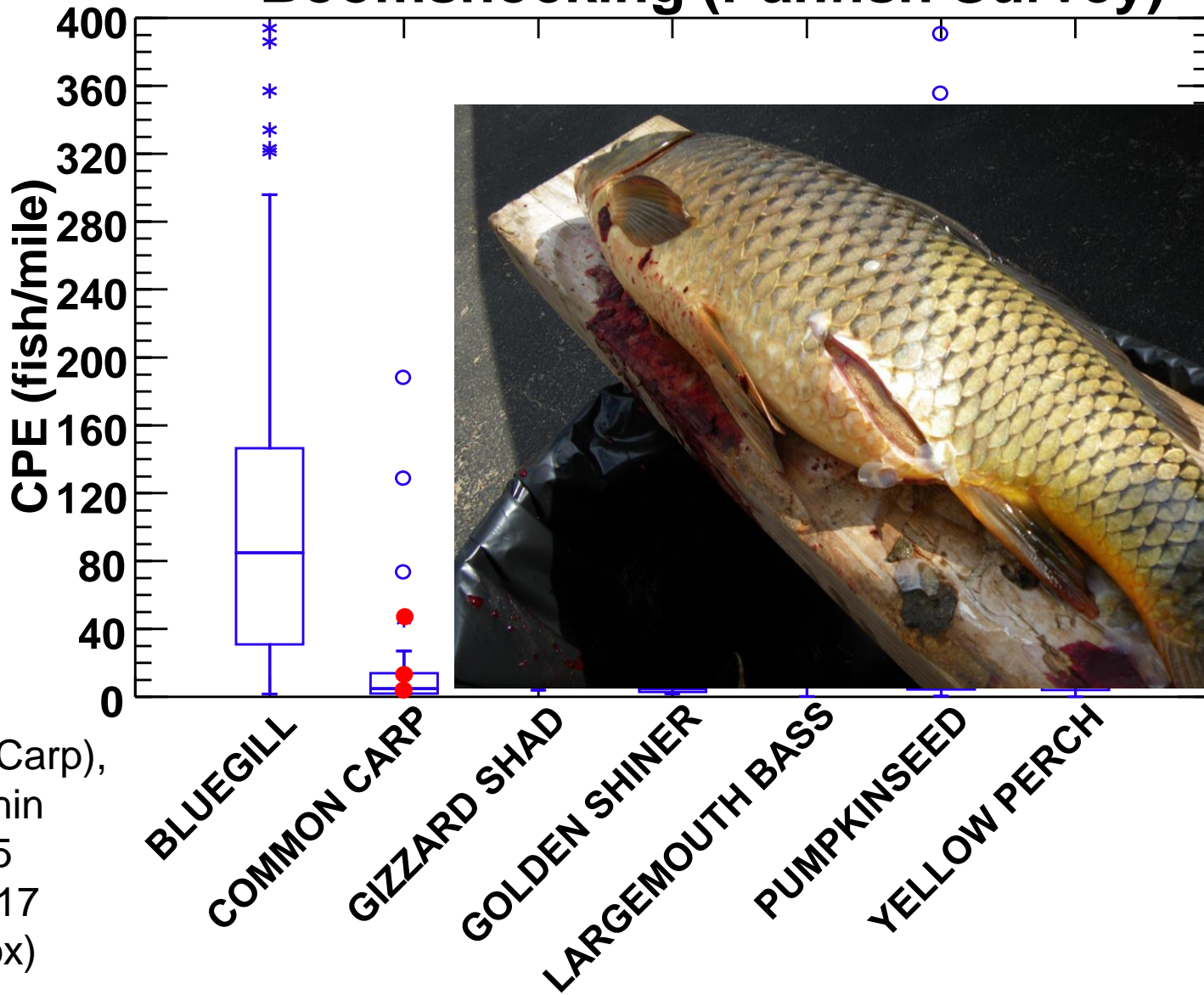


Where has Mason Lake been?



Where has Mason Lake been?

Boomshocking (Panfish Survey)

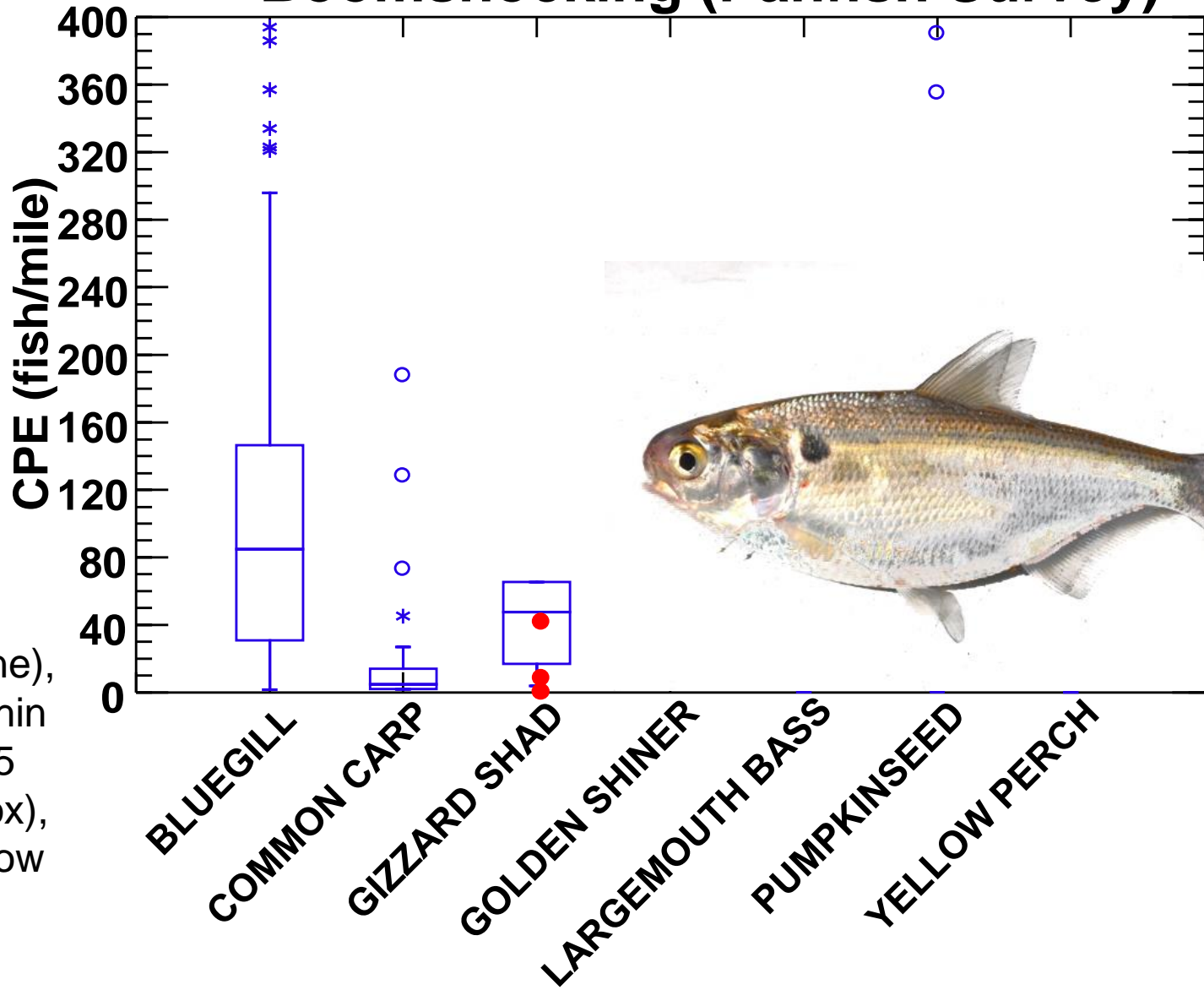


2002 (No Carp),
 2012 (Within
 Box), 2015
 (High), 2017
 (Within Box)



Where has Mason Lake been?

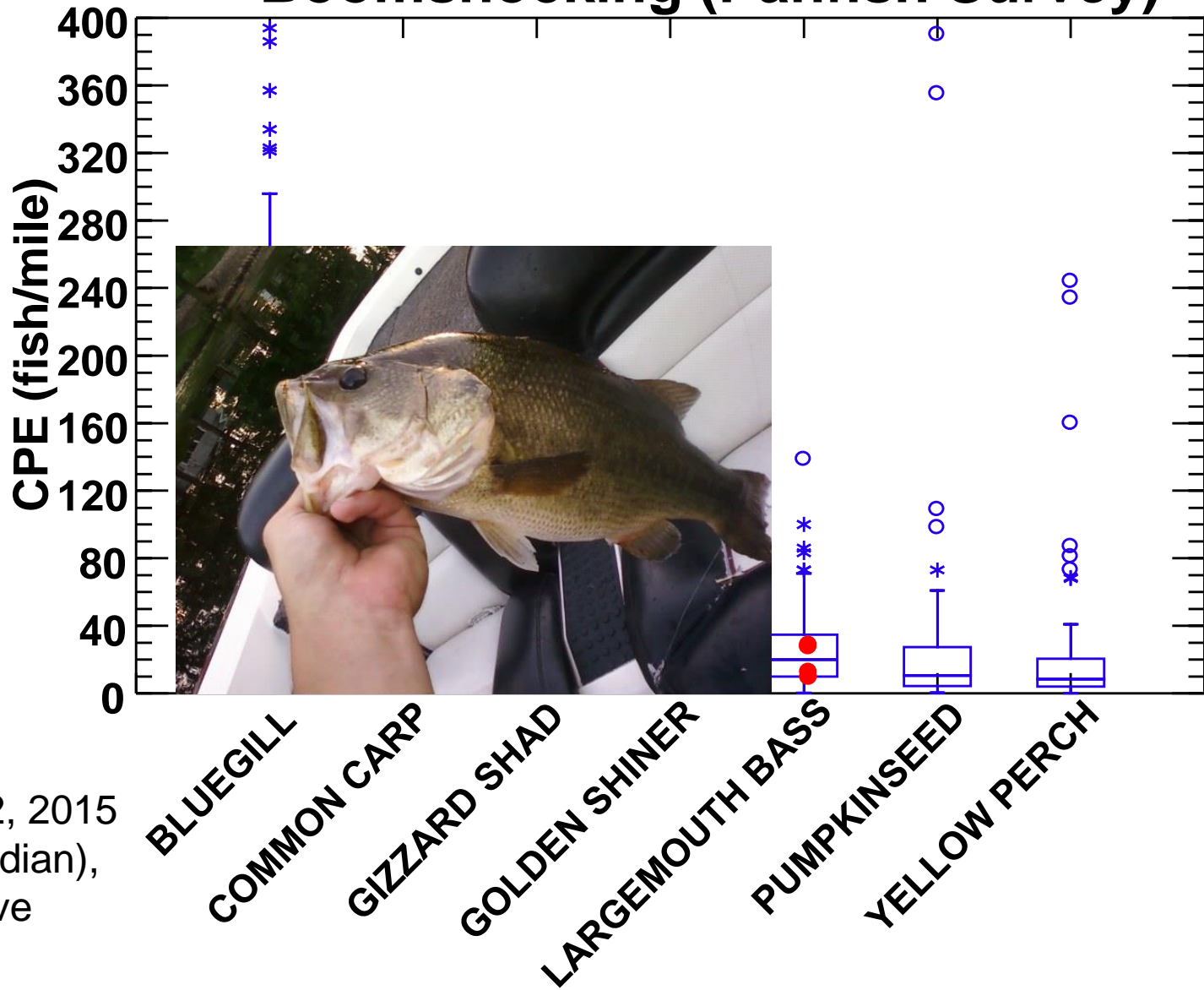
Boomshocking (Panfish Survey)



2002 (None),
 2012 (Within
 Box), 2015
 (Below Box),
 2017 (Below
 Box)

Where has Mason Lake been?

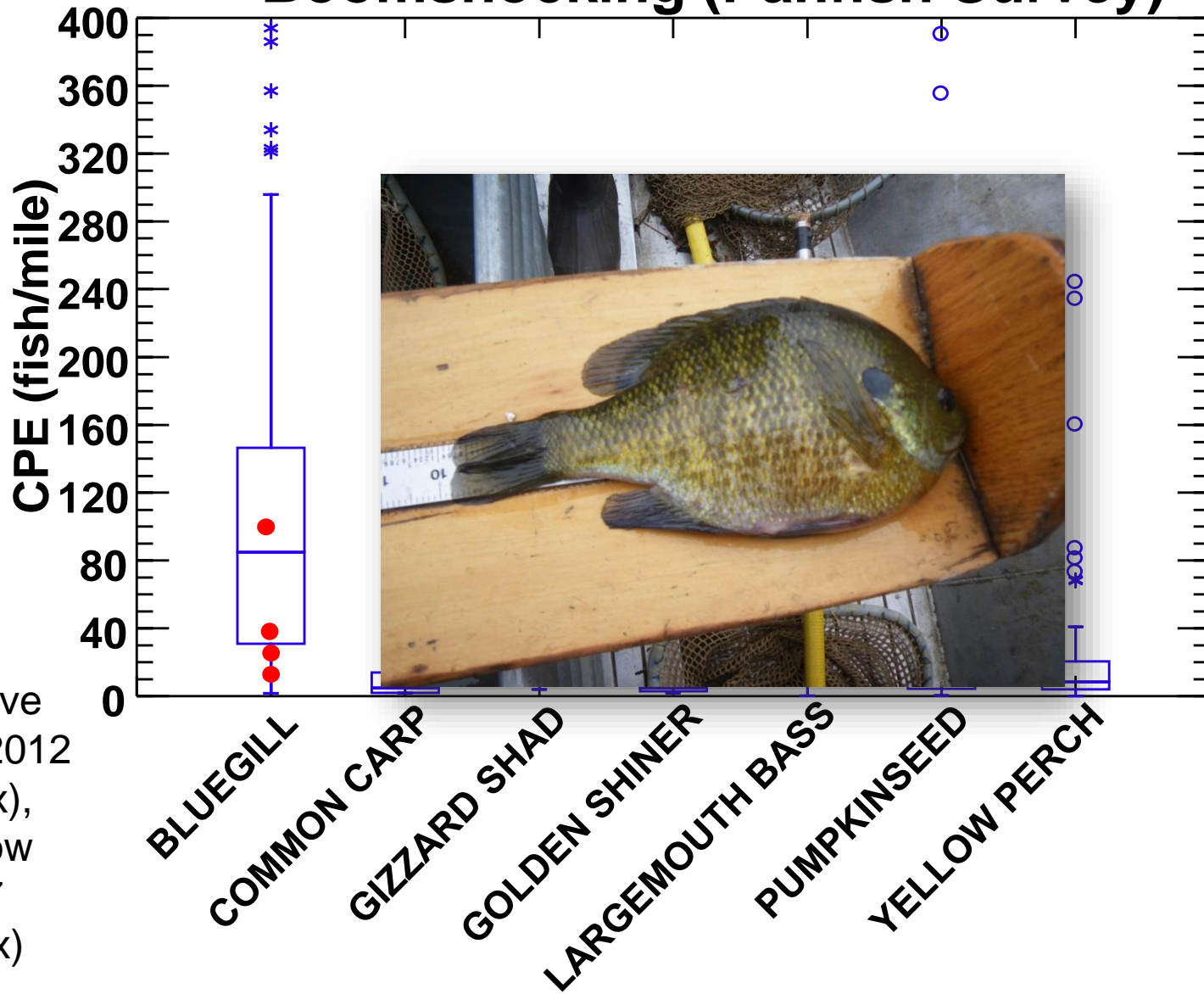
Boomshocking (Panfish Survey)



2002, 2012, 2015
 (Above median),
 2017 (Above
 Median)

Where has Mason Lake been?

Boomshocking (Panfish Survey)

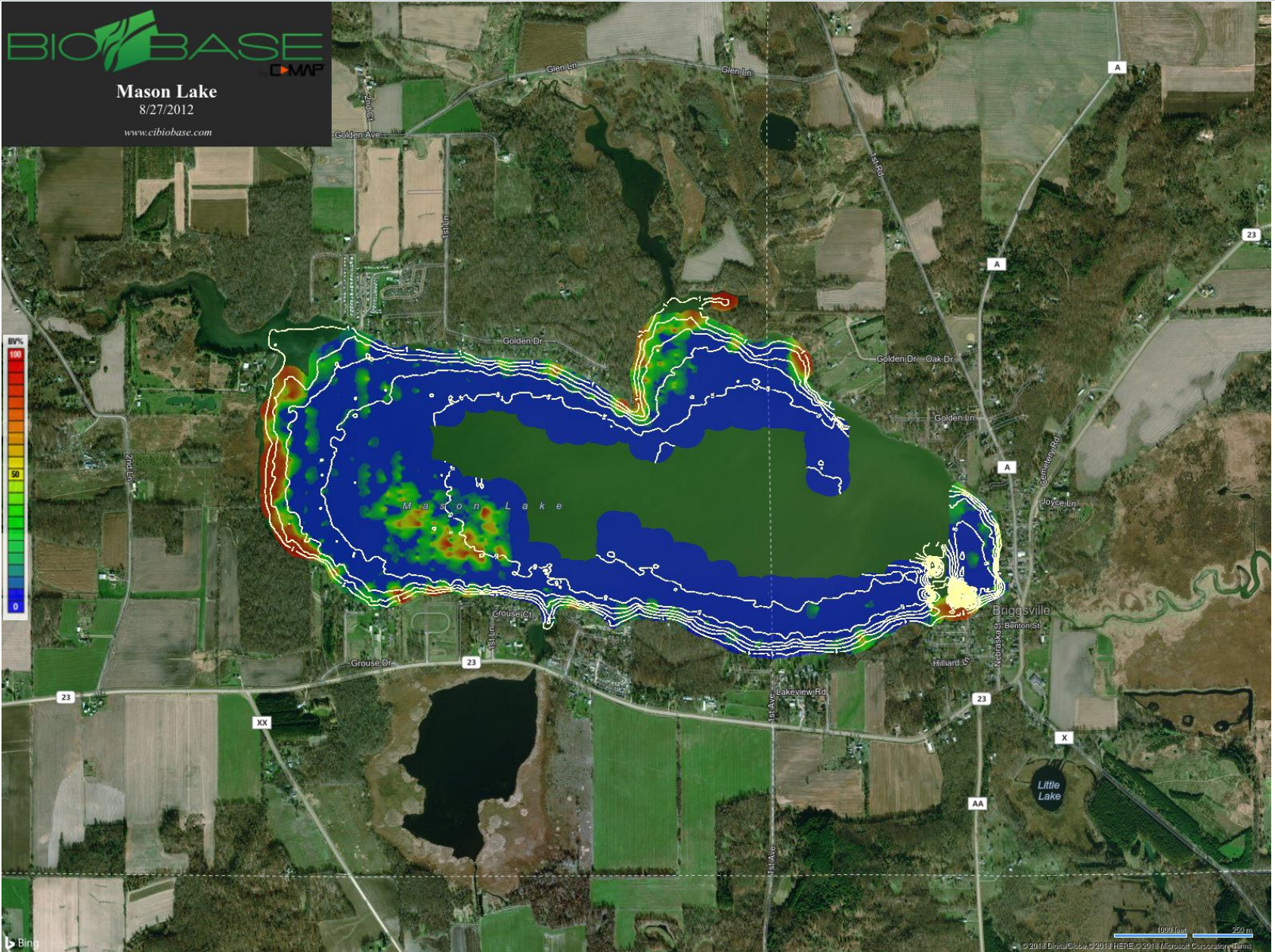


2002 (Above median), 2012 (below box), 2015 (below box), 2017 (Inside box)

Where has Mason Lake been?

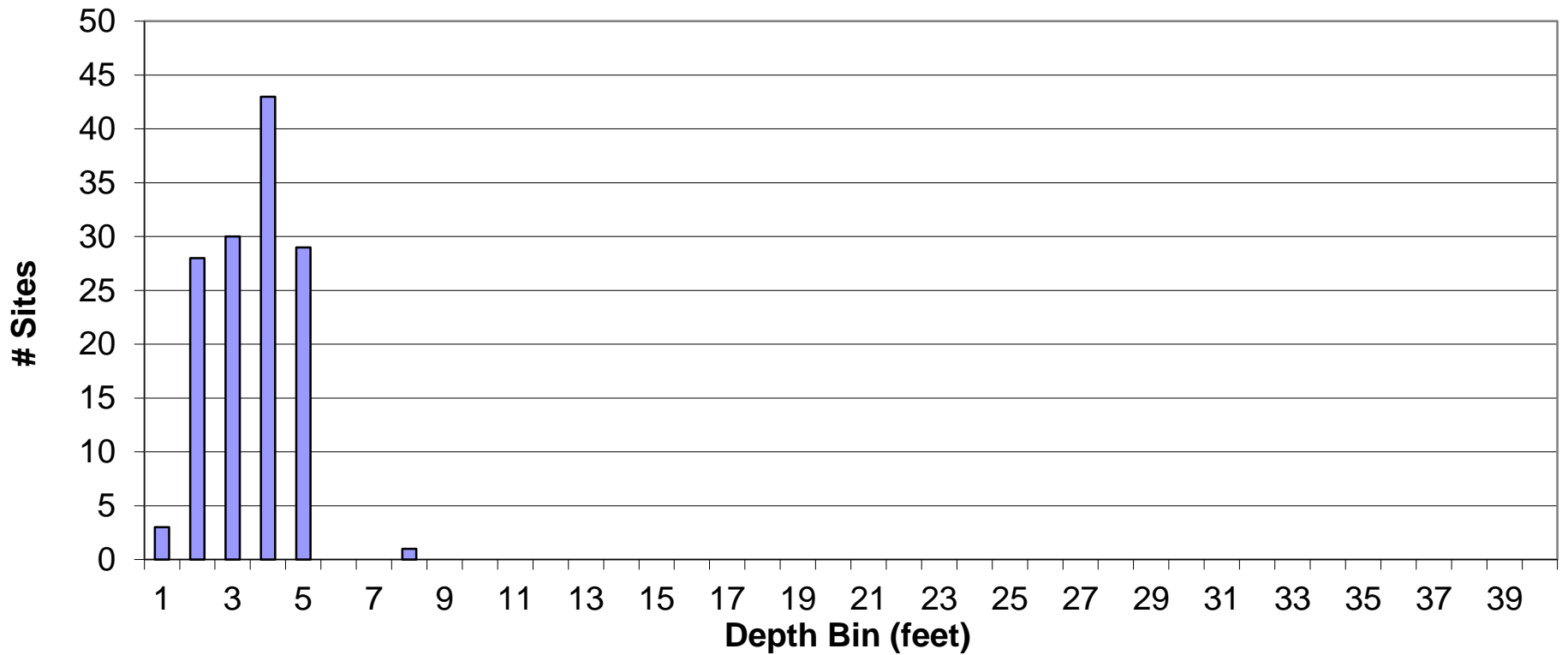
BIOBASE
MAP

Mason Lake
8/27/2012
www.cibiobase.com

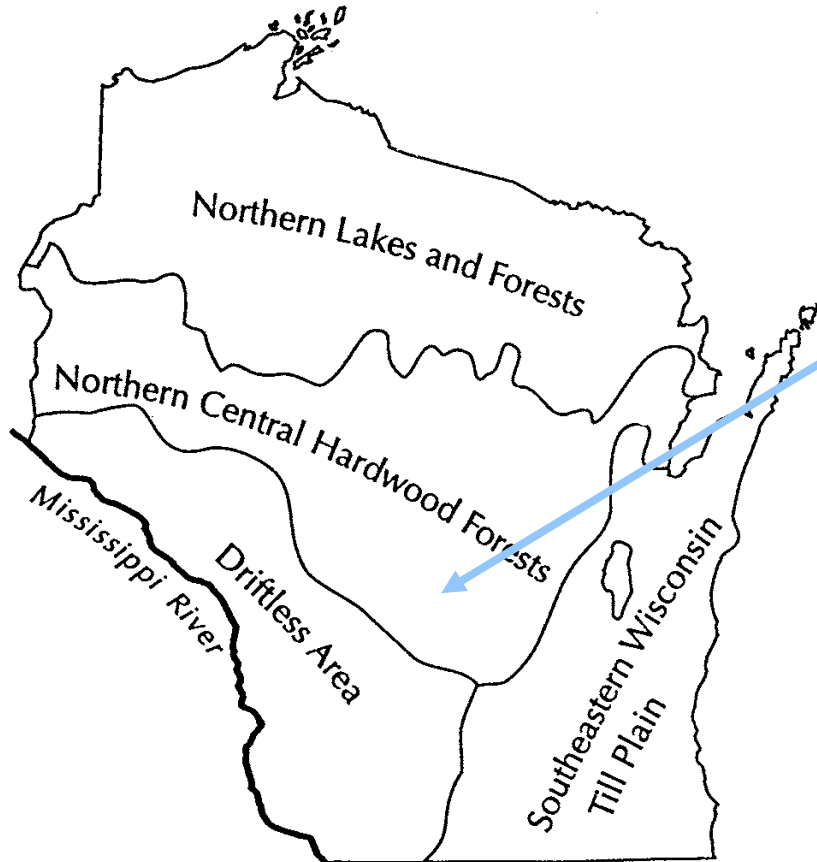


Where is Mason Lake at?

Maximum Depth of Plant Colonization



Where is Mason Lake at?



Floristic Quality Index (FQI)
 Coefficient of Conservatism (C)

	Average	Mason Lake
FQI	20.9	20.0
C	5.6	5.5

Mason Lake is just a touch below average for the ecoregion it is in. Could be better. The score would be much lower if it weren't for the inlet on the west end where diversity is much greater. The rest of the lake is well below average.

Where is Mason Lake at?

